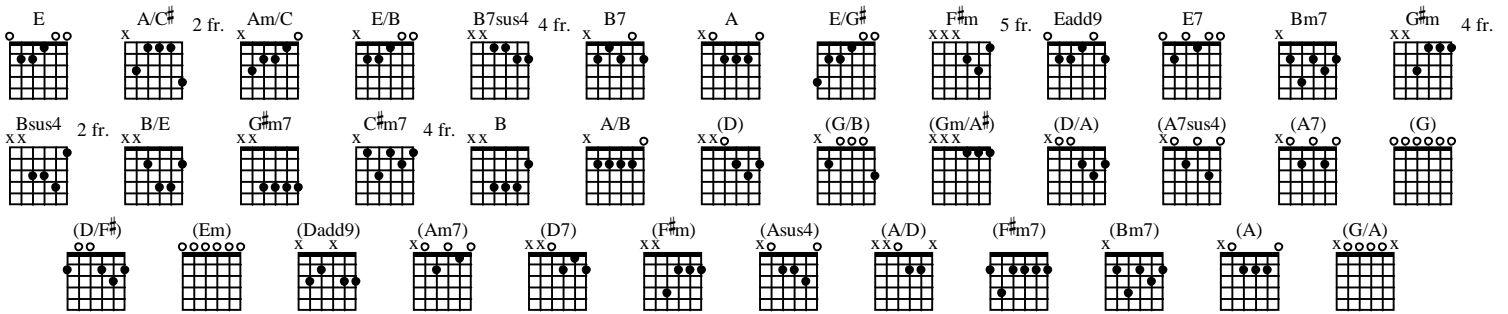


IF I KNOW ME

As recorded by George Strait
(From the 1990 Album THE CHILL OF AN EARLY FALL)

Transcribed by Mister B.

Work



A Intro

Actual Chord Names: Those in parenthesis are relative to capo

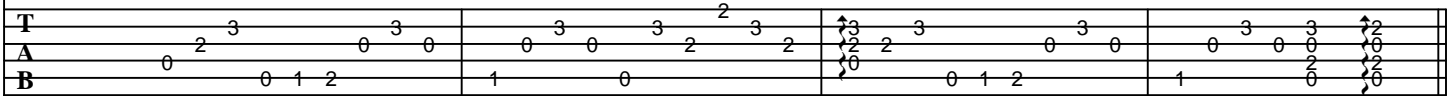
Moderate Country Ballad ♩ = 79

See Chord Diagram

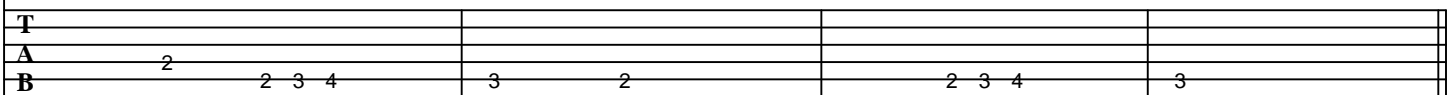
E A/C# Am/C E/B E A/C# Am/C B7sus4 B7



Gtr I Capo on 2nd fret
let ring

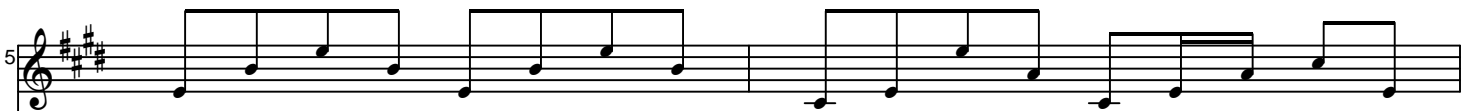


Gtr III

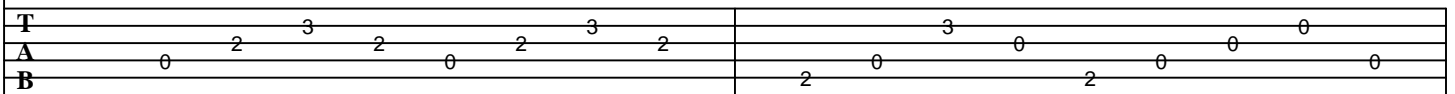


B Verse

E A/C#



Gtr I
let ring



7

B7sus4 B7 Gtr III A E/G# F#m Eadd9

let ring-----| Gtr I | let ring-----|

T 3 2 0 3 3 2 3 2

A 0 2 0 2 0 0 2 0 2 3 2

B 0 2 0 2 0 3 2 2 0 0 2 3 2

9

E Bm7 E7 A

let ring-----|

T 2 2 3 2 0 2 0 0 0 3 0 0 0 0

A 0 2 0 2 0 0 0 0 0 0 0 0

B 0 2 0 2 0 0 0 0 0 0 0 0

11

G#m A Bsus4 B7

let ring-----|

T 5 4 5 2 2 3 0 0 2 2 3 0

A 3 5 4 2 2 0 0 0 2 2 3 0

B 3 5 4 2 2 3 0 0 0 2 2 3 0

C Chorus

Gtr III E B/E E A G#m7 C#m7 F#m B

14

Gtr I

let ring

T	2	3	2	2	3	2						2	0
A	0						0	0	3			2	2
B	0						3	3		2	2	4	2

Gtr II

fff

let ring

Electric w/clean tone

T	7	5	4	7	5								
A						6							
B													

E B/E A G#m7 A E/B A/B

18

let ring

T	0	2	3	2	2	3	2						
A	0							0	0	3			
B	0							3	3		2	2	2

let ring

T	7	5	4	7	5								
A						6							
B													

Gtr III E A/C# Am/C E/B E A/C# Am/C B7sus4 B7

Gtr I
let ring

T	2	3	0	3	0	0	0	3	2	3	2	3	2	3	0	3	0	0	3	3	2
A	0	2	0	0	0	0	0	2	2	0	0	0	0	0	0	0	0	0	0	0	0
B	0	0	1	2	1	0	0	0	1	2	1	0	0	0	0	0	0	0	0	0	0

Gtr IV

T	4	5	4	5	2	5	4	4	5	4	5	5	4	2	2	2	2	2	2	2	2
A	6	4	4	2	2	2	2	2	2	2	2	2	2	2	2	2	2	2	2	2	2
B	4	2	2	2	2	2	2	2	2	2	2	2	2	2	2	2	2	2	2	2	2

Gtr II

T																					
A																					
B																					

P sl. sl.

D Verse 2

E A/C#

let ring

T	0	2	3	2	0	2	3	2	0	0	0	0	0	0	0	0	0	0	0	0	0
A	0	2	3	2	0	2	3	2	0	0	0	0	0	0	0	0	0	0	0	0	0
B	0	0	1	2	0	0	1	2	0	0	0	0	0	0	0	0	0	0	0	0	0

Chords: B7sus4, B7, A, E/G#, F#m, Eadd9

27

let ring

let ring

T 3 0 2 2 0 3 3 2 3 2

A 0 2 0 2 0 0 0 2 2

B 0 2 0 2 0 3 2 2 0 0 2

Gtr II

Steel Guitar

8va

let ring

T 16 17 19 18

A

B

Chords: E, Bm7, E7, A

29

let ring

let ring

T 2 2 3 2 0 2 0 3 0 0 0

A 0 2 2 0 2 0 0 0 0 0 0

B 0 2 0 0 0 0 0 0 0 0 0

let ring

T 17

A

B

Chords: G#m, A, Bsus4, B7

31

let ring

T 5 4 5 2 2 3 0 2 2 3 0

A 3 5 4 5 2 4 0 0 2 2 3 0

B 3 5 2 2 4 3 0 2 2 3 0

E Chorus 2

E B/E E A G#m7 C#m7 F#m B

34

Gtr I

T 2 3 2 0 2 3 2 0 0 3 0 0 3 2 2 2 4 4 3 2 2 0 0 2 2 0

A 2 2 0 0 0 0 2 2 2 2 4 4 3 2 2 0 0 2 2 0

B 0 0 3 3 2 2 2 4 4 3 2 2 0 0 2 2 0

Gtr II *let ring*

T 7 5 4 7 5 6

A

B

E B/E A G#m7 A E/B A/B

38

Gtr I

T 2 3 2 0 2 3 2 0 0 3 0 0 3 2 2 2 4 4 3 2 2 0 0 2 2 0

A 2 2 0 0 0 0 2 2 2 2 4 4 3 2 2 0 0 2 2 0

B 0 0 3 3 2 2 2 4 4 3 2 2 0 0 2 2 0

Gtr II *let ring*

T 7 5 4 7 5 6

A

B

41

Gtr III

E

F#m

E/B

A/B

Gtr I

T 0 2 3 2 0 2 0 0 2

A 0 2 3 2 0 2 0 0 2

B 2 0 0 2 0 0

Gtr IV *fff*

T 4 5 4

A 7 7 5 0 2

B 7 5 0 4 2

Gtr II

let ring

T 12 12 13 14 14 14 14 24 (24)

A 12 13 14 14

B

sl.

Chords: E, A/C#, *rit.* Am/C, B7sus4 B7, E

1

The image shows a musical score for guitar, divided into three parts: Gtr III, Gtr I, and Gtr IV. The key signature is three sharps (F#, C#, G#) and the time signature is 4/4. The Gtr III part is in treble clef and features a melodic line with chords E, A/C#, Am/C (marked *rit.*), B7sus4 B7, and E. The Gtr I part is in bass clef and provides a rhythmic accompaniment with fret numbers 0, 2, 3, 0, 1, 2, 0, 0, 3, 1, 0, 0, 3, 0, 2, 3, 0, 2, 0. The Gtr IV part is in bass clef and features a melodic line with fret numbers 4, 5, 4, 4, 2, 2, 2, 3, 2, 2, 2, 4, 4.

Gtr III

Gtr I

T

A

B

Gtr IV *f*

T

A

B